

Trumpet in C

Weather

Jazz Waltz (♩=180-190)

music : Yusuke Imanishi

arr. : Shojiro Yokoo

Intro.

A 8

B

C 

D

SOLOS

E $C\sharp m7^{(b5)}$ $F\sharp7^{(b9)}$ $Bm7$ $E7$

$Em7$ /D $C\sharp m7^{(b5)}$ $F\sharp7^{(b9)}$ $Bm7$ $E7$ $Am7$ $D7$

$Gm7$ $Gm9$ $C7$ $F\sharp7$ $B7$

$Bm7$ $E7sus$ $E7$ $Em7$ $A7$

$DM7/A$ $A7sus^{(b9)}$ $DM7/A$ $DM7$ $Ab7^{(\sharp11)}$

$Gm7^{(\sharp11)}$ $Cm9$ $F7$ $F\sharp7$ $B7$

$Em7$ $F7^{(\sharp11)}$ $Bb7$ $Em7$ $Gm7$ $BbM7$

$Bm7$ $Gm7$ $Ebm7$ $Em7$ $Gm7$ $BbM7$

$Bm7$ $Gm7$ $Ebm7$

ON CUE

F $Dm7$ $Dbb9^{(\sharp5)}$ $Gm9$ $C7sus^{(add10)}$

Sax. in C

Weather

Jazz Waltz (♩=180-190)

music : Yusuke Imanishi

arr. : Shojiro Yokoo

Intro. **3** **PLAY 2ND TIME ONLY**

A **4** **7**

B **3**

C **f** **7**

5 **3**

D

E Solos

$C\#m7^{(b5)}$ $F\#7^{(b9)}$ $Bm7$ $E7$

$Em7$ /D $C\#m7^{(b5)}$ $F\#7^{(b9)}$ $Bm7$ $E7$ $Am7$ $D7$

$Gm7$ $Gm9$ $C7$ $F\#7$ $B7$

$Bm7$ $E7sus$ $E7$ $Em7$ $A7$

$DM7/A$ $A7sus^{(b9)}$ $DM7/A$ $DM7$ $Ab7^{(\#11)}$

$Gm7^{(\#11)}$ $Cm9$ $F7$ $F\#7$ $B7$

$Em7$ $F7^{(\#11)}$ $Bb7$

Em⁷ Gm⁷ BbM⁷ Bm⁷ Gm⁷ EbM⁷

Em⁷ Gm⁷ BbM⁷ Bm⁷ Gm⁷ EbM⁷

ON CUE
 (F) Dm⁷ Db9^(#5) GM⁹ C_{7sus}^(add 10)

(G)

(H) PIANO SOLO

13

D.S. al Coda

(C) CODA

OPEN DRUM SOLO (X TIMES) 7

1x ONLY

(1)

Rit.

Trombone

Weather

Jazz Waltz (♩=180-190)

music : Yusuke Imanishi

arr. : Shojiro Yokoo

Intro.

Introductory musical notation for Trombone. It consists of a single staff in bass clef with a 3/4 time signature. The piece begins with a repeat sign. The first measure contains a triplet of eighth notes (3). The second measure is a whole rest (5). The third measure contains a triplet of eighth notes (3). The fourth measure is a whole rest (5). The piece ends with a final triplet of eighth notes (10).

Musical notation for section A, starting with a circled 'A' and a measure rest (8). The staff is in bass clef with a 3/4 time signature. It features a series of eighth notes, some with slurs, and a triplet of eighth notes at the end.

Musical notation for section B, starting with a circled 'B'. The staff is in bass clef with a 3/4 time signature. It features a series of eighth notes with various accidentals (sharps, flats) and slurs.

Musical notation for section C, starting with a circled 'C' and a measure rest (8). The staff is in bass clef with a 3/4 time signature. It features a series of eighth notes with various accidentals and slurs.

Musical notation for section D, starting with a circled 'D' and a measure rest (8). The staff is in bass clef with a 3/4 time signature. It features a series of eighth notes with various accidentals and slurs. A triangle symbol is placed above the staff.

Musical notation for section E, starting with a circled 'E' and a measure rest (8). The staff is in bass clef with a 3/4 time signature. It features a series of eighth notes with various accidentals and slurs.

Musical notation for section F, starting with a circled 'F' and a measure rest (8). The staff is in bass clef with a 3/4 time signature. It features a series of eighth notes with various accidentals and slurs.

Solos

Staff 1: $C\#m7^{(b5)}$ $F\#7^{(b9)}$ $Bm7$ $E7$

Staff 2: $Em7$ /D $C\#m7^{(b5)}$ $F\#7^{(b9)}$ $Bm7$ $E7$ $Am7$ $D7$

Staff 3: $GM7$ $Gm9$ $C7$ $F\#7$ $B7$

Staff 4: $Bm7$ $E7_{sus}$ $E7$ $Em7$ $A7$

Staff 5: $DM7/A$ $A7_{sus}^{(b9)}$ $DM7/A$ $DM7$ $Ab7^{(\#11)}$

Staff 6: $GM7^{(\#11)}$ $Cm9$ $F7$ $F\#7$ $B7$

Staff 7: $Em7$ $F7^{(\#11)}$ $Bb7$

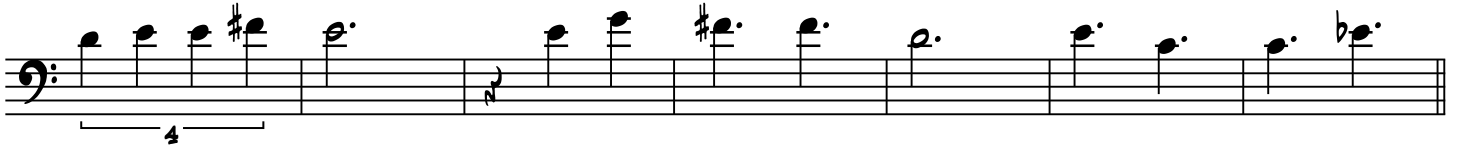
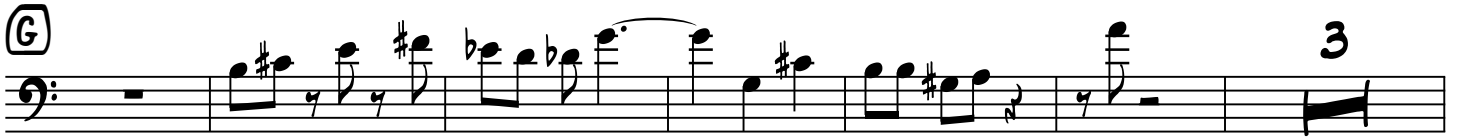
Staff 8: $Em7$ $Gm7$ $BbM7$ $Bm7$ $Gm7$ $EbM7$

Staff 9: $Em7$ $Gm7$ $BbM7$ $Bm7$ $Gm7$ $EbM7$

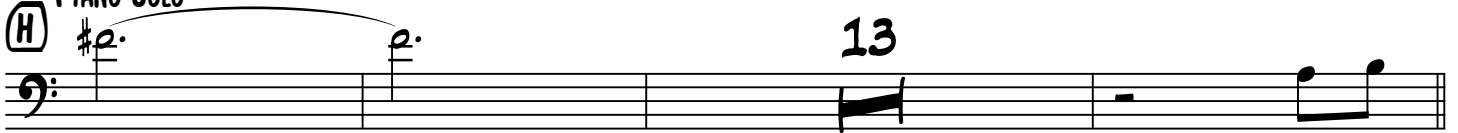
ON CUE

F Dm⁷ Db⁹(#5) GM⁹

C_{7sus}^(add10)



PIANO SOLO



D.S. al Coda

⊕ CODA

OPEN DRUM SOLO (X TIMES) 7



Chords

Weather

Jazz Waltz (♩=180-190)

music : Yusuke Imanishi

arr. : Shojiro Yokoo

Intro.

UNIS. Pf, B

Em⁷ Gm⁷ BbM⁷ 5 8^{vb}

Bm⁷ Gm⁷ EbM⁷ 5 8^{vb}

Dm⁷ Db⁹(#5) GM⁹ C₇^{sus}(add 10)

The introductory section consists of three staves of music in 3/4 time. The first staff contains chords Em⁷, Gm⁷, and BbM⁷. The second staff contains Bm⁷, Gm⁷, and EbM⁷. The third staff contains Dm⁷, Db⁹(#5), GM⁹, and C₇^{sus}(add 10). The notation includes eighth notes, quarter notes, and half notes, with some notes beamed together. There are also dynamic markings like '8^{vb}' and a 'UNIS. Pf, B' instruction.

A C_#m⁷(b5) F_#⁷(b9) Bm⁷ E₇

Em⁷ /D C_#m⁷(b5) F_#⁷(b9) Bm⁷ E₇ Am⁷ D₇ D₇^(b9 #11)

Section A consists of two staves of music. The first staff contains chords C_#m⁷(b5), F_#⁷(b9), Bm⁷, and E₇. The second staff contains Em⁷, /D, C_#m⁷(b5), F_#⁷(b9), Bm⁷, E₇, Am⁷, and D₇ D₇^(b9 #11). The notation features dotted quarter notes and eighth notes.

B GM⁷ Gm⁹ C₇^{sus} C₇ F_#¹³ F_#⁷(#5) F_#⁷ B₇

Bm⁷ E₇^{sus} E₇ Em⁷ A₇

Section B consists of two staves of music. The first staff contains chords GM⁷, Gm⁹, C₇^{sus}, C₇, F_#¹³, F_#⁷(#5), F_#⁷, and B₇. The second staff contains Bm⁷, E₇^{sus}, E₇, Em⁷, and A₇. The notation features dotted quarter notes and eighth notes.

C DM⁷ Em⁷ A₇^(b9) DM⁷ Em⁷ DM⁷ Ab₇^(#11)

A A A A A A

GM⁷(#11) Cm⁹ F₇ F_#⁷ B₇^{sus} B₇

Em⁷ F₇^(#11) Bb₇ 5 3

Section C consists of three staves of music. The first staff contains chords DM⁷, Em⁷, A₇^(b9), DM⁷, Em⁷, DM⁷, and Ab₇^(#11). The second staff contains A, A, A, A, A, A. The third staff contains GM⁷(#11), Cm⁹, F₇, F_#⁷, B₇^{sus}, and B₇. The final staff contains Em⁷, F₇^(#11), Bb₇, and a double bar line with a 5/4 time signature change and a 3/4 time signature. There is a circled cross symbol at the end.

D

Em⁷ Gm⁷ BbM⁷

Bm⁷ Gm⁷ EbM⁷

Dm⁷ Db⁹(#5) GM⁹ C_{7sus}(add 10)

8^{vb} 8^{vb}

E

Solos

C[#]m⁷(b5) F[#]₇(b9) Bm⁷ E₇

Em⁷ /D C[#]m⁷(b5) F[#]₇(b9) Bm⁷ E₇ Am⁷ D₇

GM⁷ Gm⁹ C₇ F[#]₇ B₇

Bm⁷ E_{7sus} E₇ Em⁷ A₇

DM⁷/A A_{7sus}(b9) DM⁷/A DM⁷ Ab₇(#11)

GM⁷(#11) Cm⁹ F₇ F[#]₇ B₇

Em⁷ F₇(#11) Bb₇

Em⁷ Gm⁷ BbM⁷ Bm⁷ Gm⁷ EbM⁷

Em⁷ Gm⁷ BbM⁷ Bm⁷ Gm⁷ EbM⁷

ON CUE
 (F) Dm⁷ Db9^(#5) GM⁹ C_{7sus}^(add 10)

(G) C#m^{7(b5)} F#7^(b9) Bm⁷ E7

Em⁷ /D C#m^{7(b5)} F#7^(b9) Bm⁷ E7 Am⁷ D7^(#5) D13^(b9)

PIANO SOLO
 (H) GM⁷ Gm⁹ C7 F#7 B7

Bm⁷ E7 Em⁷ A7

D.S. al Coda

⊕ CODA

OPEN DRUM SOLO (X TIMES)

Em⁷ Gm⁷ BbM⁷ Bm⁷ Gm⁷ EbM⁷

(I) Em⁷ Gm⁷ BbM⁷ Bm⁷ Gm⁷ EbM⁷

Dm⁷ Db9^(#5) GM⁹ C_{7sus}^(add 10)