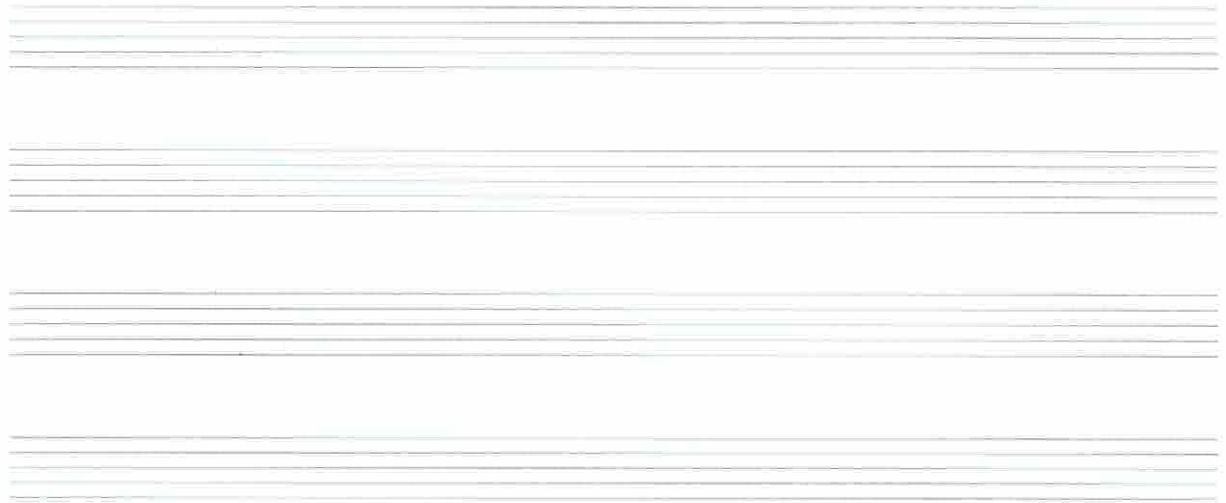
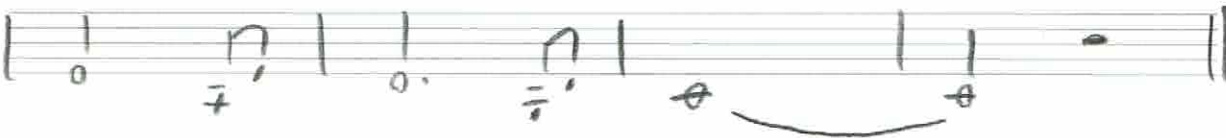
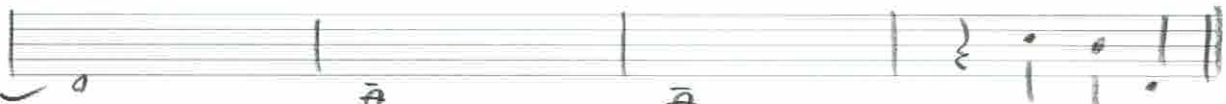
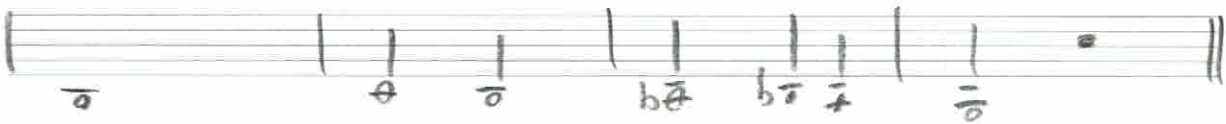
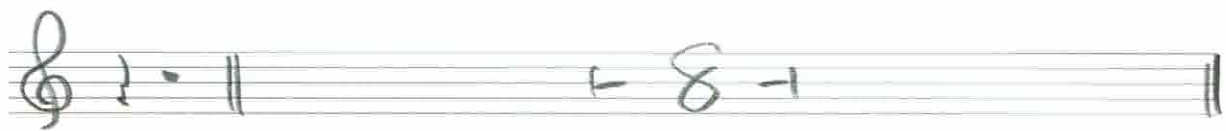
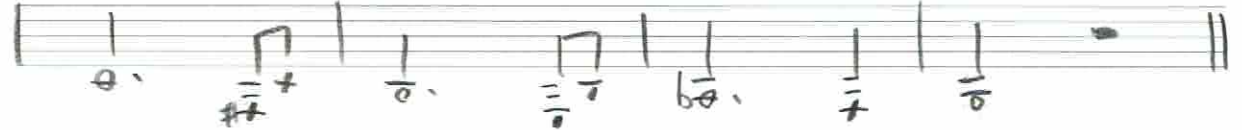
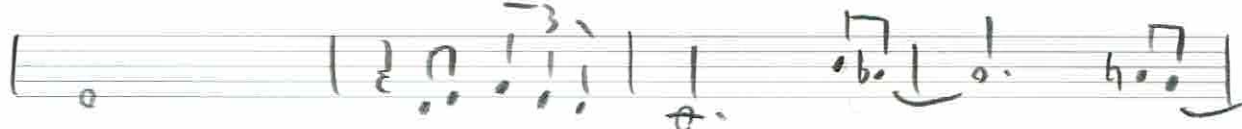
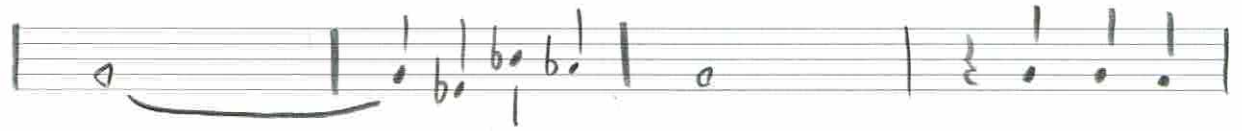
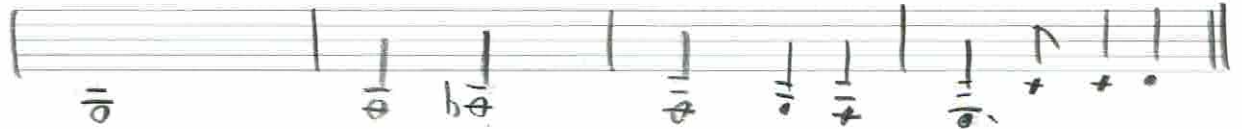
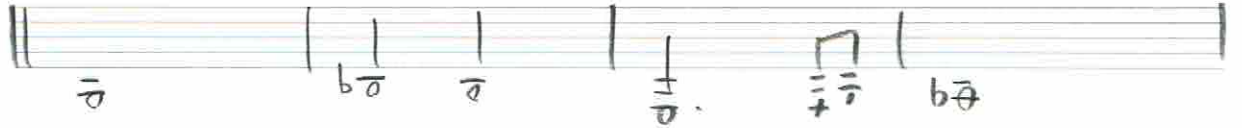


ト

空 - 風



# 空 - 風



$\flat$   $\text{♩} = 87$

空 - 風

Handwritten musical score for '空 - 風' (Sora - Kaze). The score is written on ten staves. The first staff begins with a treble clef, a key signature of one flat (B-flat), and a tempo marking of quarter note = 87. The music consists of a series of notes and rests, with some notes marked with a '+' sign. The second staff contains a measure with a brace and a '+' sign. The third staff contains a measure with a brace. The fourth staff contains a measure with a brace. The fifth staff contains a measure with a brace. The sixth staff contains a measure with a brace. The seventh staff contains a measure with a brace. The eighth staff contains a measure with a brace. The ninth staff contains a measure with a brace. The tenth staff contains a measure with a brace.

# 空・風

Handwritten musical score for the piece "空・風" (Sora Kaze). The score consists of ten staves, each containing a series of chords and notes. The chords are written above the notes, and the notes are written on a five-line staff. The chords are: A-7, G-7, C7, F-7, E7, A-7, F#7, B-7, E7, A-7, G-7, C7, F-7, E7 (F#), A-7, D-7, G7, D-7/C, C-7, A-7/G, F#7, C-7/G, A-7/G, F#7, C-7, B-7, E7, A-7, D-7, D-7, C, B-7, E7, A-7, G-7, C7, F-7, E7 (F#), A-7, D-7, G7, D-7/C, C-7, B-7, E7.

Two empty musical staves at the bottom of the page, consisting of five lines each.