

tr (in C)

Piece of Cake

The first system of handwritten musical notation consists of three staves. The top staff is in treble clef and contains a melodic line with a repeat sign at the beginning and a triplet of eighth notes at the end. The middle staff is in bass clef and contains a bass line with a triplet of eighth notes at the beginning. The bottom staff is a blank bass clef staff. The music includes various rhythmic values, accidentals, and articulation marks.

#b only

The second system of handwritten musical notation consists of four staves. The top staff is in treble clef and contains a melodic line with a triplet of eighth notes. The second staff is in bass clef and contains a bass line with a triplet of eighth notes. The third staff is in treble clef and contains a melodic line with a triplet of eighth notes. The fourth staff is in bass clef and contains a bass line with a triplet of eighth notes. The music includes various rhythmic values, accidentals, and articulation marks.

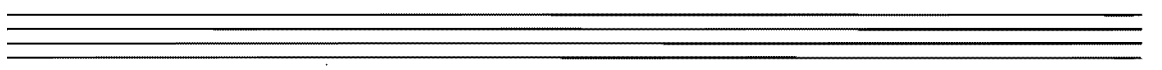
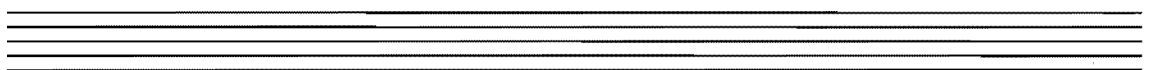
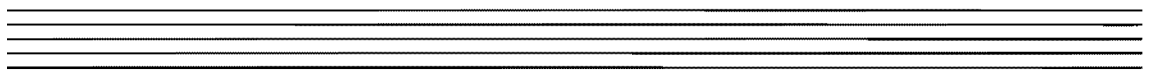
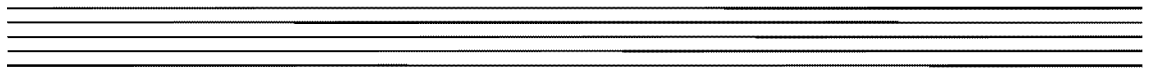
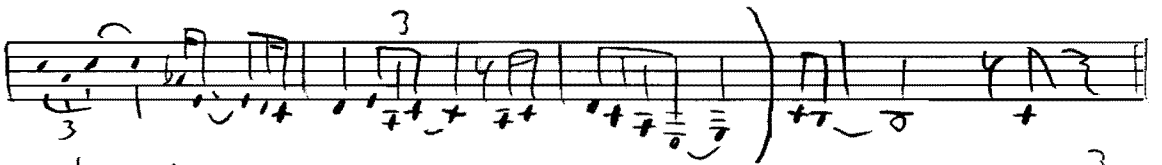
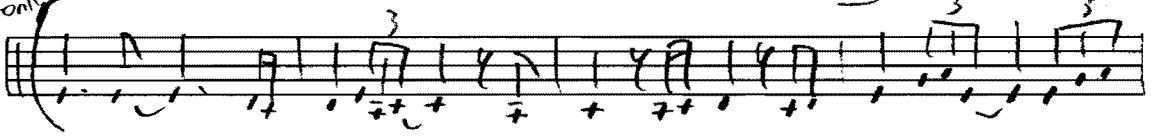
Five empty musical staves, each consisting of a five-line staff with a clef (treble or bass) and a key signature (one sharp).

as
ts (in C)

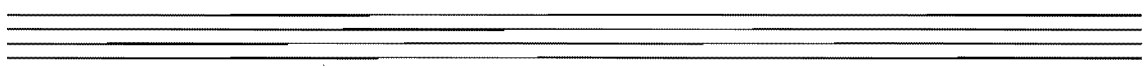
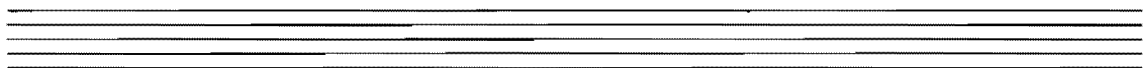
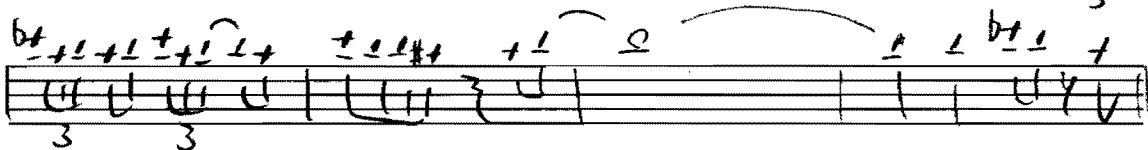
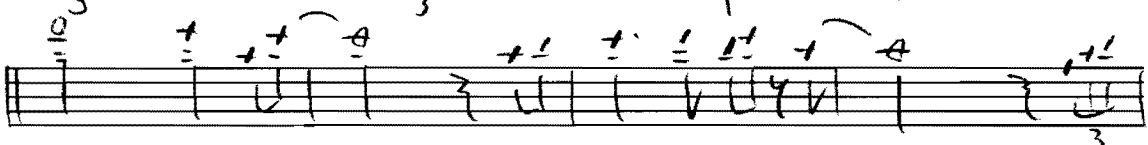
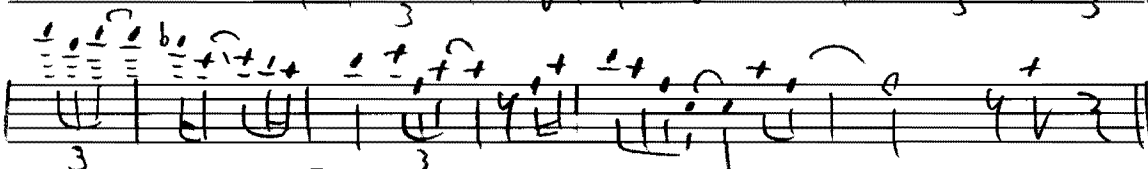
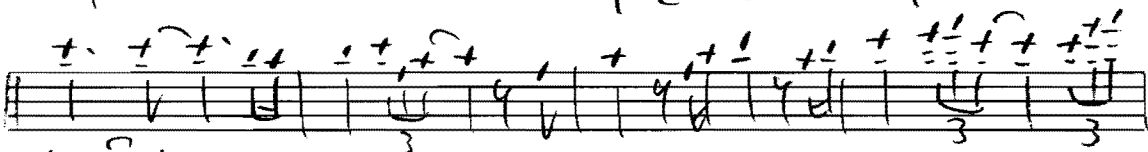
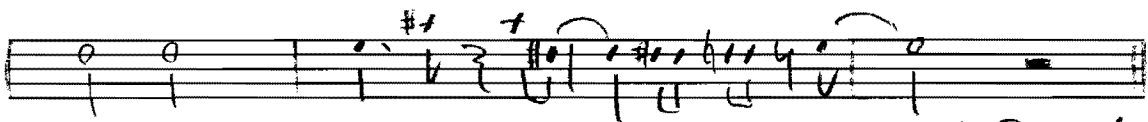
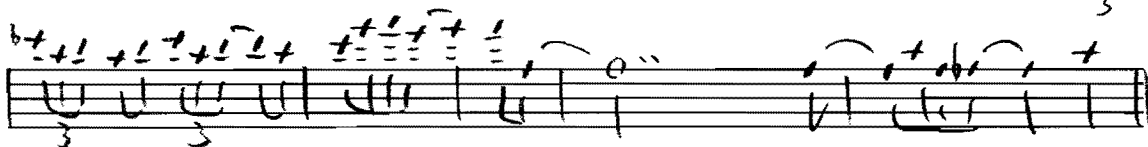
Piece of Cake



tb only



Piece of Cake



Rhythm Section

Piece of Cake

2 Bars

D₇ G₇ C₇ F₇ B^{b5}₇ E₇ A₇ D₇

D₇ G₇ E₇ A₇ D₇^(b9) D₇ G₇

E₇ A₇ D₇ G₇ C₇ B^(b5)₇ E₇

A₇ /A^b /G D₇ D₇ /C B^(b5)₇ E₇

A₇ /A^b /G F^{#(b5)}₇ B₇ E₇ A₇ A₇^(#9)

D₇ G₇ C₇ F₇ B^(b5)₇ E₇ A₇ D₇

D₇ G₇ E₇ A₇^(#5) D₇/G A^b/G₇ D₇

Ending E₇ A₇^(#5) D₇/G A^b/G₇ C₇